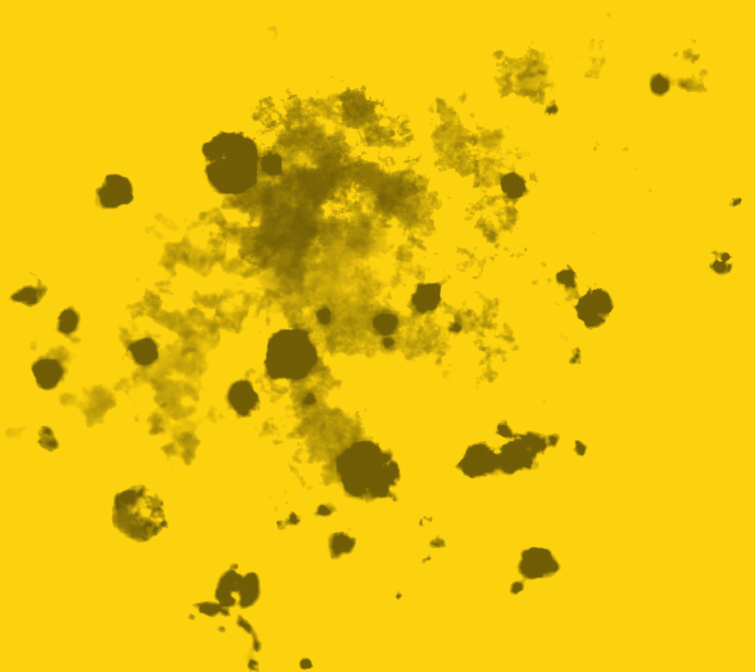


DIY FABRIC MASK



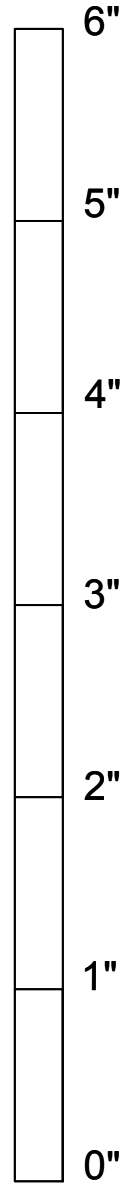
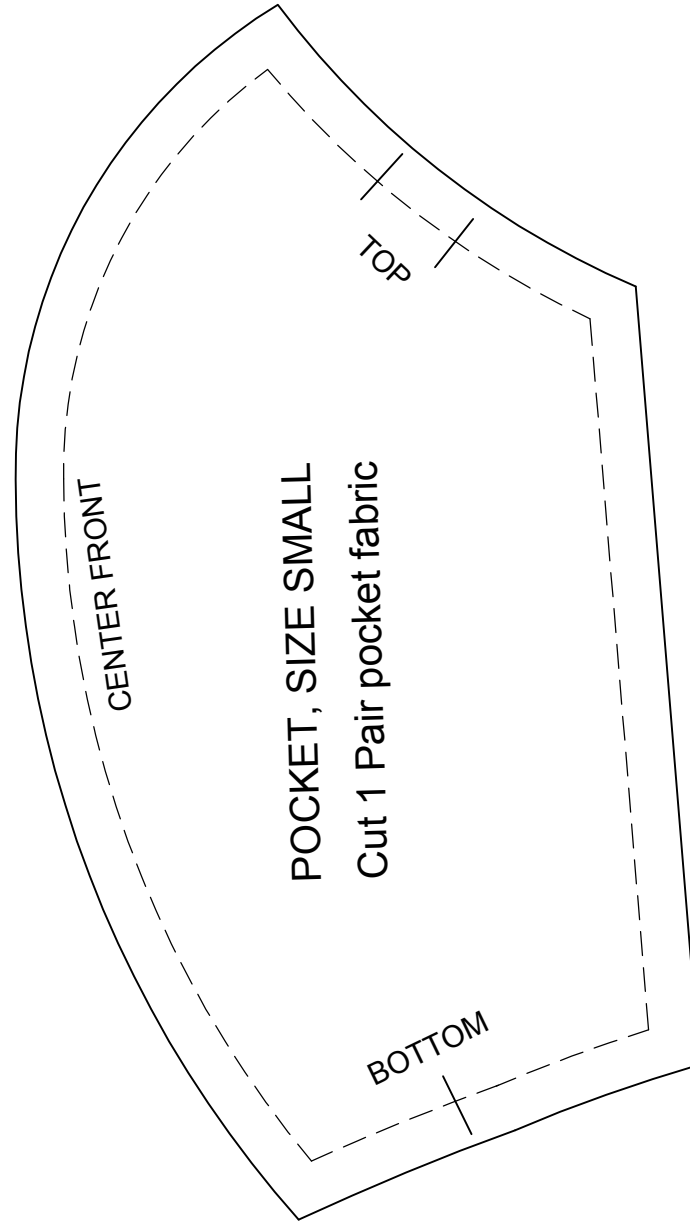
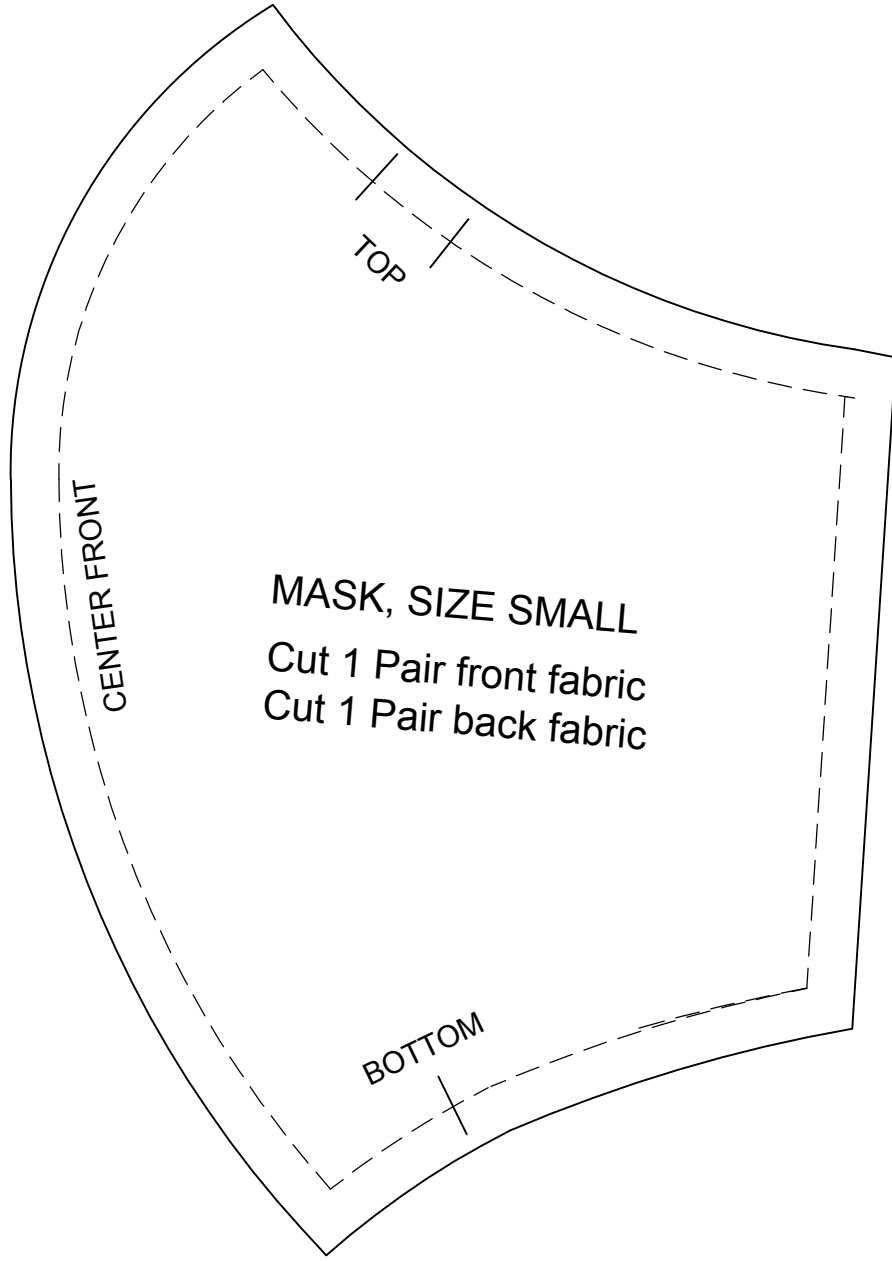
MATERIALS:

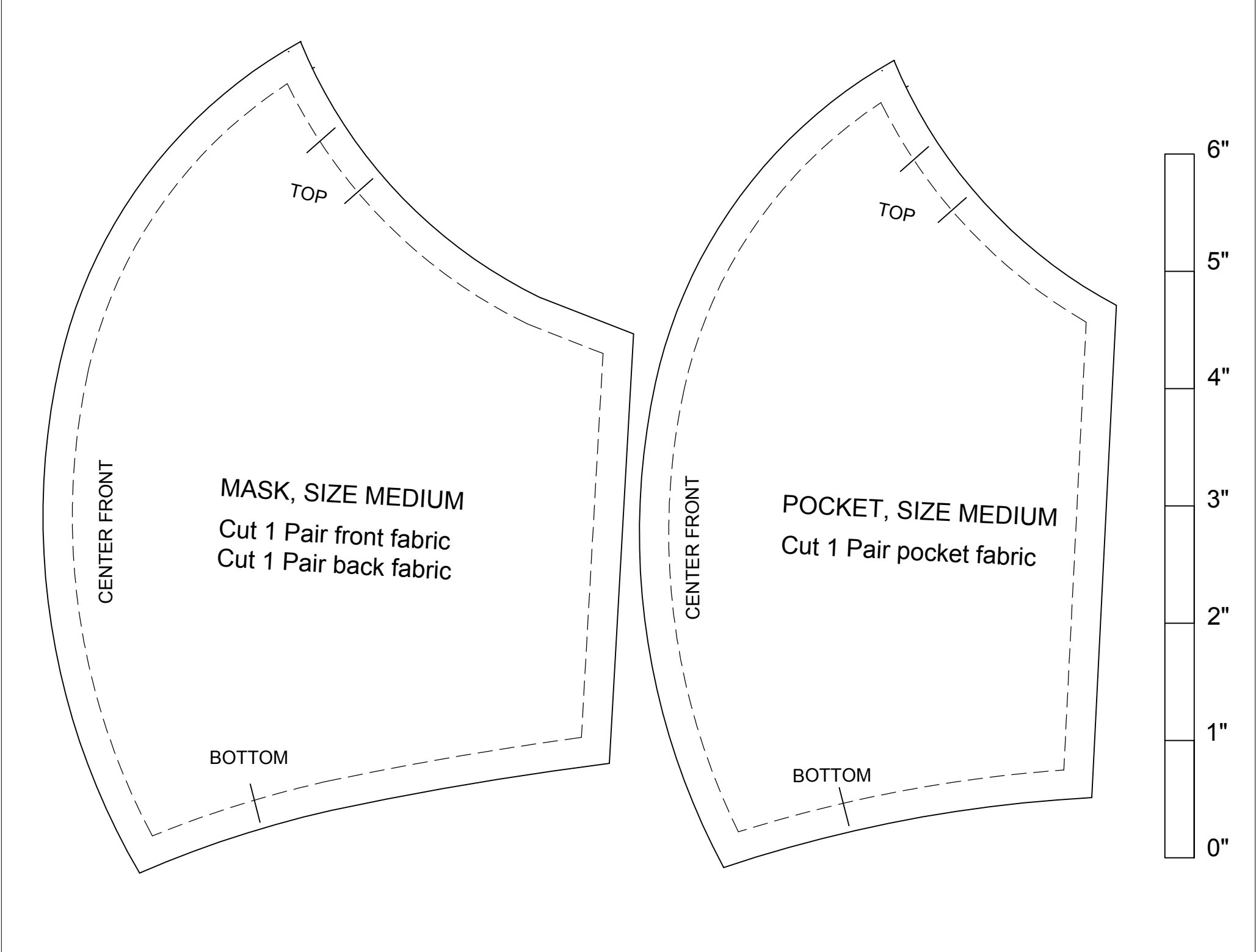
- Outer fabric min. 32 x 21cm to make size L (100% cotton tight weave fabric)
- Inner fabric min. 32 x 21cm to make size L (100% cotton tight weave fabric)
- Ties (t-shirt yarn, ribbon, shoelaces, thing flat elastic)
- (OPTIONAL) Pocket fabric min. 26 x 21cm to make size L (this can be any fabric you desire)
- (OPTIONAL) Wire for nose (hobby wire, jewelery wire, wire from a single use mask)
- (OPTIONAL) Scrap piece of fabric to create a channel for your nose wire

EQUIPMENT:

- Sewing needle OR sewing machine
- Sewing thread (matching or contrasting)
- Pins
- Scissors OR rotary cutter
- (OPTIONAL) Pliers







CENTER FRONT

MASK, SIZE MEDIUM
Cut 1 Pair front fabric
Cut 1 Pair back fabric

TOP

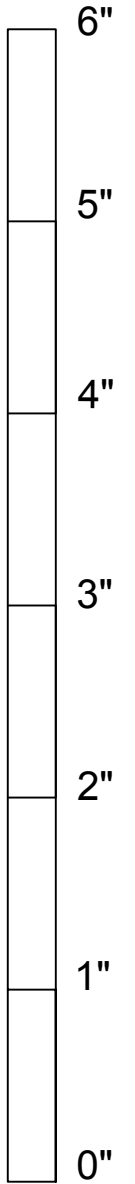
BOTTOM

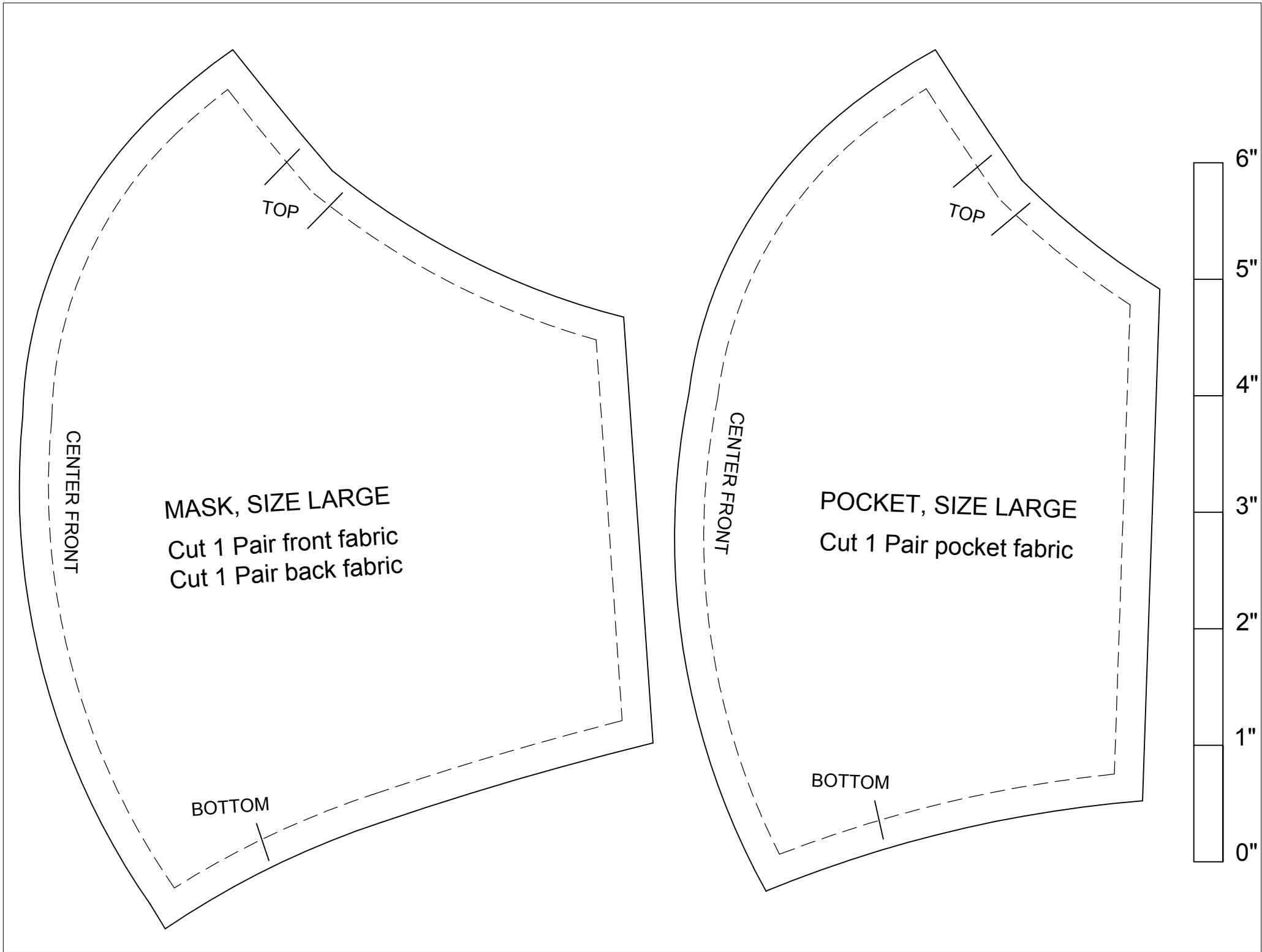
CENTER FRONT

POCKET, SIZE MEDIUM
Cut 1 Pair pocket fabric

TOP

BOTTOM





INSTRUCTIONS:

- 1) Print out the included PDF pattern making sure to print at 100%, there is a measurement guide so you can make sure it's at the correct scale.
- 2) After you've selected your outer fabric fold it in half short sides together, so you cut out 2 panels at once, if you're using a patterned fabric check that the faces are together and pin the larger pattern piece onto your fabric before cutting your fabric out.
- 3) Repeat step 2 for your inner fabric & pocket fabric pieces.



- 4) You'll now have 2 (3 if creating a pocket) matching pairs, place each pair FRONT sides together, pin along the long curved side and sew with $\frac{1}{4}$ " seam allowance. Press your seams open on each piece or trim off the bulk of the seam allowance.



- 5) If creating a pocket, fold the edges over twice towards the back, press with an iron and top stitch them down. This creates a nice edge for the opening of your pocket.



- 6) Cut a piece of wire long enough that it reaches from the middle of each eye when shaped over the bridge of your nose. With your scrap fabric sew a channel and one of the short ends, insert your nose wire and stitch the other short end to encase the wire completely.



- 7) Lay your inner fabric piece right side up and place the pocket piece on top also right side up, make sure your seam lines up at the top and bottom, pin both pieces together.



- 8) Place and pin your ties onto the front fabric piece, pin the ends roughly 1cm in from the top and bottom edges. Make sure the head of your pins are facing the outside edge of your fabric so you can remove it as you sew.



- 9) Now place your front fabric with pinned ties FRONT side down on top of your back & pocket pieces of fabric. Make sure your ties are sitting completely inside the sandwiched pieces of fabric, so the wearable areas don't get caught when you sew.
- 10) Pin your nose wire channel along the top edge of the front panel of fabric, make sure it is centered to the fabric panels.
- 11) Sew around the sandwiched fabric with a $\frac{1}{4}$ " seam allowance, back stitch over the end of each tie for added strength. Leave an opening between the ties at one side.



- 12) Using the opening you've just created turn your masks right side out use the end of a pen or paintbrush and push out the corners of the mask.



- 13) Use an iron and press the edges of your mask folding in the seam allowance that was left from the opening.



- 14) Top stitch around the entire edge of your mask, be careful when you get to the end of the nose wire, you can easily top stitch just below it.



NOW ENJOY

YOUR MASK!