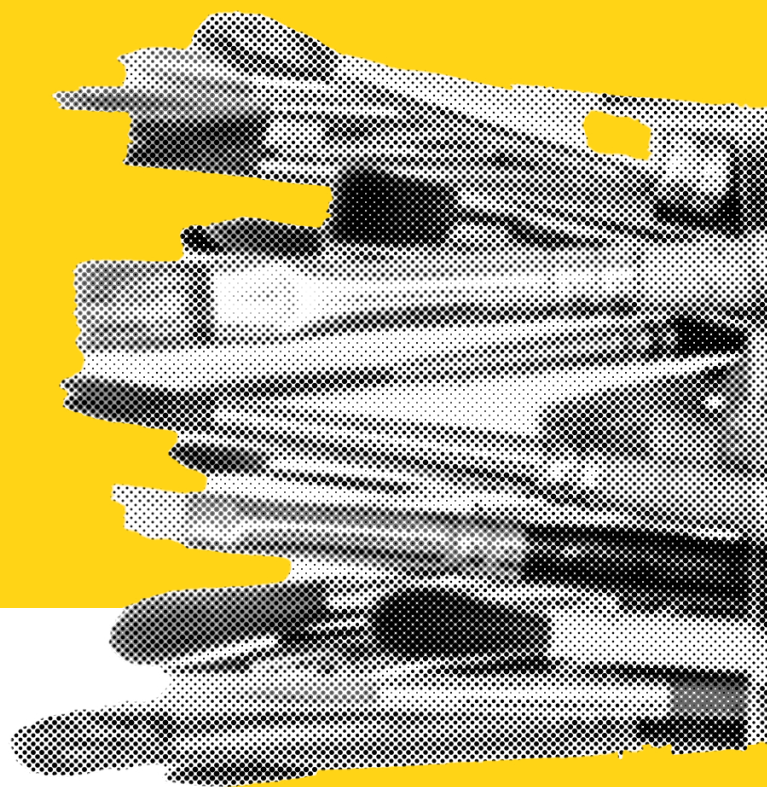


GET



FAQ'ed

AT LCI MELBOURNE



“

What are the questions
on your mind when you
want to study Art and Design
at Australia's leading institute...?

”

GET FAQ'ed

WHAT IS DISTINCTIVE ABOUT LCI?

WHY IS STUDYING THE BACHELOR OF DESIGN ARTS (BDA) BETTER THAN A SPECIALIST DEGREE?

LCI has led the change in Australia with an art and design degree that enables options – a true collaborative degree where students can curate their own preferences and pathways.

Often students are unsure where their creative strengths should be focussed. At LCI we give you an opportunity to workshop your creative skills and explore opportunities not available in singular degrees or in the schooling system.

You can also mix disciplines throughout the program, work closely and collaboratively with your creative peers and even finish up with a double degree (in only 3 years) across creative specialisations.

WHAT TYPE OF STUDENT ATTENDS LCI?

- ♥ You are passionate about a career in the creative field
- ♥ You want to create amazing work
- ♥ You want to be with other creative minded people just like you
- ♥ You need to have an enquiring mind
- ♥ You are excited about the endless opportunities the world of creativity can offer
- ♥ You love the joy of innovation
- ♥ You can't wait to be in a place where you can focus on what you really want to do
- ♥ You need to have a creative spirit we help you discover how and where to take it
- ♥ You don't mind being challenged

HOW IS LCI DIFFERENT TO UNIVERSITIES?

AT LCI WE HAVE A PERSONALISED APPROACH YOUR EDUCATION, YOU ARE NOT A NUMBER TO US.

- ♥ Our staff are mentors finding the strengths in each individual and cultivating these so students find their fortes
- ♥ We have intimate class sizes – lots of one-on-one engagement so we find your strengths and develop them
- ♥ We know our students, as an artist or designer you will have particular ways of creating and we get to learn these with you, developing your style of working
- ♥ We are about flexibility and options, we listen to your needs regarding workloads, concerns and then help you curate your own career path

GET FAQ'ed

I WANT TO KNOW
MORE ABOUT WHAT
I WILL STUDY...

WHAT IS THE BACHELOR OF DESIGN ARTS?

The LCI Bachelor of Design Arts (BDA) offers an exceptional and unique education by allowing you to explore the creative disciplines and discover your strengths. The BDA offers a blend of studio-based classes where you explore, experiment and create concepts in your preferred major and sub major areas.

You can explore across your creative loves or focus on one area. We help you discover, develop and springboard into careers that work for you.

Why is it exceptional and unique? Imagine what you love, test it, try it, blend it. Any of our major areas can be explored and combined: fashion, costume, visual arts, photography, film, digital design, graphics and interior design.

Discover more about our BDA [here.](#)

CAN I DO STUDY TOURS OR EXCHANGES?

LCI Melbourne is truly global, with 23 campuses over 5 continents we have an amazing support network for you to virtually connect to or spend time at any of our global sites.

Consider spending a trimester away in Montreal, Barcelona, Costa Rica or many of our creative hotspots across the globe.

WHAT EXPERTISE DO LCI TEACHERS HAVE?

LCI academics are practising artists and designers leading in their respective fields - they are mentors in the classroom and icons in the industry.

Our academics are globally recognised as experts, with a passion for developing future artists and designers.

I WANT TO KNOW MORE ABOUT WHEN AND HOW I WILL STUDY...

IF LCI IS SMALL, DO YOU HAVE THE RESOURCES?

LCI Melbourne has smaller cohorts to allow us to specialise but we are part of a significant global organisation, with approximately 20,000 students across our network.

This is a perfect combination - we have a personal approach combined with large scale business expertise that provides amazing infrastructure and state of art resources.

A visit to our amazing campus right in the heart of Collingwood will show you we have the best creative campus and facilities for an independent design school.



GET FAQ'ed

“ WHY IS THE BDA ONLY TWO YEARS? ”

WHY IS THE BDA ONLY TWO YEARS?

LCI wants you to join industry and explore your passion without delay. Instead of stretching 6 semesters over 3 years with tediously long breaks we fast track the experience as if you were already in industry (where you will be expected to be fast and fabulous). Six innovative trimesters in two years that are dynamic and maintain the momentum of your creative development. No boring breaks!

WHAT WILL MY TIMETABLE BE LIKE?

At LCIM you will have 50 credit points in a fulltime load split across major studio-based classes (we call them workshops and laboratories), professional units and context units.

Generally, for a full time load you will have 15 hours in class activity and then allow approximately 20 hours a week for student directed additional work at your own pace. You will have 2 to 3 days per week on campus – although you can always hang out when you don't have formal classes and use the resources and space.

WILL I BE ABLE TO STUDY PART-TIME?

YES! We offer flexible and tailored options to suit you. You should note however part-time study will not be available to domestic students who require Centrelink support or international students who need to comply with student visa requirements.

WHAT IF I WANT TO TAKE A BREAK?

Even with LCI Melbourne's support systems, students sometimes require time off during their studies due to personal difficulties or other reasons. At any time after commencement, you may apply for Leave of Absence, for a period of 2 to 3 trimesters.

This may be different if you are an international student because of visa requirements.
Chat to our Student Services Team [Here](#) if you want further advice.

If you decide to leave the program after successfully completing 4 trimesters full-time study, you can apply to receive an Associate Degree of Design Arts.

GET FAQ'ed

I WANT TO KNOW
MORE ABOUT LIFE
AFTER LCI...

HOW LIKELY AM I TO GET A JOB AFTER FINISHING MY QUALIFICATION?

With a vast array of industry networks in Australia and overseas, LCI is the institute in touch with the creative fields. We open our little black book of contacts to support our students in professional placements, industry projects and kickstarting your careers.

IS IT HARD TO GET A CAREER IN ART AND DESIGN?

The creative industries are thriving, major business operations now seek out experts in creativity to lead divisions (places like Deloitte, KPMG and Price Waterhouse Cooper now have Creative Directors).

During 2020 and 2021 in Victoria, the creative industries rose above the pandemic to make significant contributions to the economy. Our friends at Creative Victoria shared the statistics: 171,149 people are employed in creative industries across design disciplines aligned to what we teach at LCI. At least 1 in 10 people in Victoria work in design related fields – **that is significant.**

Don't let anyone tell you, you can't get a career in the area that you love!

WHAT IF I WANT TO EXTEND MY STUDIES?

The Bachelor of Design Arts offers the option of completing with a Double Degree. This allows you to undertake two complete major study programs, developing your versatility and skillset.

If you decide on this option early in your enrolment, the double major can be completed within a single extra year. We also have amazing pathways with our global network – imagine finishing with an international master's degree!

GET FAQ'ed

**I AM NOT SURE
WHAT I WANT TO
DO AT TERTIARY...**

AM NOT SURE WHAT I WANT TO MAJOR IN...

Oh, LCI is made for you! In your first trimester of the degree it is all about exploring different creative workshops called space, image, message and body.

LCI provides the platform for speculation and fun while discovering areas where you can shine. We then discuss with you, your areas of strength and possible pathways of specialisation you can take in the degree.

I'M NOT SURE IF I'M READY FOR HIGHER EDUCATION. WHAT IF I NEED EXTRA HELP?

Because of its size and specialisation, LCI Melbourne is well adapted to supporting students, academically and in many other ways. As a result, LCI Melbourne has a consistently high rankings (around 90%) in the [National QILT Survey](#) – placing us higher than most universities and in the top ten independent institutes in Australia.

I NEED MORE INFO...

HOW CAN I FIND OUT MORE ABOUT LCI MELBOURNE'S PROGRAMS?

Specific enquiries about our creative programs can be directed to our Future Student Team at: applications@lcmelbourne.edu.au

IF MY PARENTS, MATES OR THE CAREERS COUNSELOR ASK TO FIND OUT MORE ABOUT LCI, WHERE SHOULD THEY LOOK?

LCI Melbourne is an approved Higher Education Institute and is on the Commonwealth Register of Institutions and Programs for Overseas Students (CRICOS). Our programs are nationally accredited by the Commonwealth Government's Tertiary Education Quality and Standards Agency (TEQSA).

We are also part of the National Government Student Experience Survey called QILT that compares all Higher Education Institutes and Universities (who participate). LCI ranks above the national averages across all areas of the QILT Survey. External information can be found on:



[The National Register](#) administered by the Commonwealth Government's Tertiary Education Quality and Standards Agency, the [Commonwealth Register of Institutions and Programs for Overseas Students](#) (CRICOS), and the [QILT \(Quality in Teaching and Learning\)](#) website.

GET

FAQ'ed

QUESTIONS ABOUT
JOINING THE
LCIM COMMUNITY

WHAT IS THE DEADLINE FOR APPLICATIONS?

We accept applications all year, right up until the start of each trimester provided there are still places available.

HOW DO I APPLY?

Best to check out all the details on our [how to apply page](#) and if you need more info chat to our Future Student Advisors at applications@lcimelbourne.edu.au.

WHAT SHOULD I INCLUDE IN MY PORTFOLIO?

Please see our [Interview & Portfolio Guide](#), which contains information about our selection criteria and the ideal contents of a portfolio. At LCI we are interested in your creative ideas, we love seeing sketch books brimming and even the quick back of a napkin sketches – bring them all we get as excited as you do!

If some of your work is unavailable (for example, it is currently being marked for your Year 12 results), we simply recommend that you bring in examples of the best work you can access.

LCI Melbourne holds free folio advice and presentation consultations to help you select and present your work in the most effective way. To make a personalised appointment please chat to a Future Student Advisor [here](#).

CAN I SPEAK WITH AN LCI MELBOURNE FUTURE STUDENT ADVISOR ABOUT MY APPLICATION?

Yes, our Future Student Advisors are available to chat. If you cannot touch base during normal business hours, we are also happy to talk after hours and on weekends. At LCI we understand that creativity doesn't sleep.

We don't believe in bots, automated phone menus or virtual queues, so when you contact our Future Student Team here you'll speak to a real person!



GET FAQ'ed



CAN I APPLY FOR A SCHOLARSHIP?

CAN I APPLY FOR A SCHOLARSHIP?

We welcome all students to apply for an LCI Melbourne scholarship. We are looking for students who want to make an impact and are poised to thrive in their creative studies to apply for our scholarship program.

There are two scholarship types available:

Creative: Covering 15% of your full-time tuition fees, with selection focused on portfolio and academic performance.

Indigenous: Covering 50% of your full-time tuition fees for students who are of Aboriginal and Torres Strait Islander descent.

DOES LCI MELBOURNE OFFER RECOGNITION OF PRIOR LEARNING (RPL)?

Yes. If you are a mature aged student, had experience in creative industries and you can demonstrate that you have the knowledge, skills and experience required to satisfy the specified unit outcomes, you will be granted recognition of prior learning.

IF I HAVE STUDIED A RELATED COURSE OR PROGRAM AT ANOTHER INSTITUTE OR UNIVERSITY, CAN I GAIN CREDIT FOR MY STUDIES?

Yes. If you successfully completed studies at another recognised institute, you will be able to apply for credit at LCI Melbourne. LCI will look at aligned unit learning outcomes and the Australian Qualifications Framework level of your previous studies to determine which units you will receive credit for.

For more information chat to a Future Student Advisor at applications@lcmelbourne.edu.au

AM I ALLOWED TO DEFER MY STUDIES?

Yes of course. LCI Melbourne students who have accepted an offer, paid the administration fee and commenced classes, are eligible to defer for 12 months. Applications to defer must be made on the official 'Deferral or Leave Application Form', which is emailed or submitted in person to the LCI Melbourne Student Experience Team.

Students will be notified in writing as to whether the application to defer has been accepted or denied. There are restrictions and you need to do this before the Census cut-off date.

Reach out to our Student Services Team [here](#) to find out if you are eligible.

SHOULD I APPLY AS A DOMESTIC OR AN INTERNATIONAL STUDENT?

If you are an Australian or New Zealand citizen, or you have a permanent residency visa, you are classed as a domestic student.

*Please note however, that unless you are an Australian citizen or hold a permanent**humanitarian' visa, you will not be eligible for FEE-HELP and will have to pay your tuition fees up-front.

All other applicants are considered [international students](#) and should apply as per the international students page of our website or reach out directly to our Future Student Team at applications@lcmelbourne.edu.au.

GET FAQ'ed

QUESTIONS ABOUT \$

TO SECURE MY PLACE HOW DO I PAY MY DEPOSIT?

LCIM accepts payment in person via credit card at the LCI campus, please visit the student experience team at the front desk. Alternatively, you can transfer through electronic fund – contact our friendly Future Student Team for our bank transfer details.

CAN I ACCESS THE FEDERAL GOVERNMENT LOAN SCHEME FEE-HELP?

Yes, at LCIM if you are an Australian fee-paying student (full-time or part-time) you can access the Government Loan Scheme FEE-HELP to pay your tuition fees if you are undertaking an accredited program.

Check out the Government's [Study Assist](#) website to get more information about FEE-HELP.

CAN I PAY MY FEES UP-FRONT?

Domestic students have the option and international students are required to pay upfront fees. To find out what this means please go to our [Fees page](#) or chat to our Future Student Team at applications@lcimelbourne.edu.au.

HOW MUCH ARE THE FEES?

For a run-down of the LCI Melbourne fees for all programs, pop over to our [Fees page](#).

